

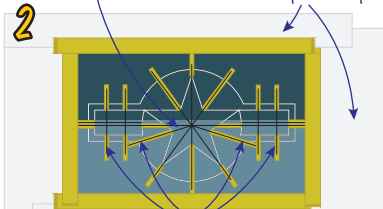
APPLICATION OF STAR AND BAR- OVERPAINTED

1. Finish model as you would prior to placing standard decals. We would recommend *lightly* sealing the finish with a good quality matt or semi-matt modelling varnish.

2. A) Apply entire mask to required area. B) Cover area around the mask with paper and low tack (Tamiya) modelling tape. C). Cover the registration lines on the BLUE section with tape to prevent them from being covered by paint.

Stage 2 Step A. Place mask in required position on painted model. Cut to size if needed.

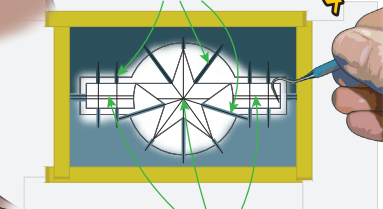
Stage 2 Step B. Mask off area around mask to prevent overpaint.



Stage 2 Step C. Cover registration lines on BLUE section with low tack modelling tape.

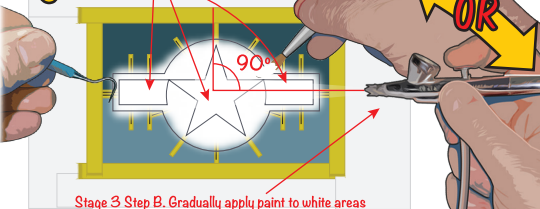
3. A) Carefully remove the masks covering the (to be painted) WHITE sections. Ideally use a (Kits-World) pick to do this as it is quite a delicate task. Set these parts on the backing sheet. B) Spray (or hand-paint) the white sections taking care to build up the paint in thin layers. If spraying, do so at a 90° angle to the model surface. Finally, lightly seal the white with matt varnish.

Stage 4 Step A. Remove masking tape covering the alignment guides.

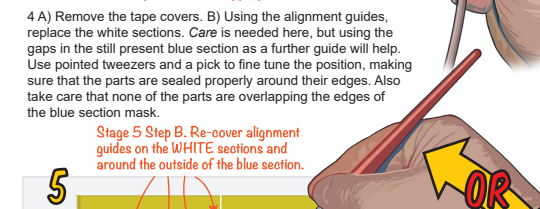


Stage 4 Step B. Carefully replace white mask sections using both the alignment guides and the edges of the blue mask section which is still in place.

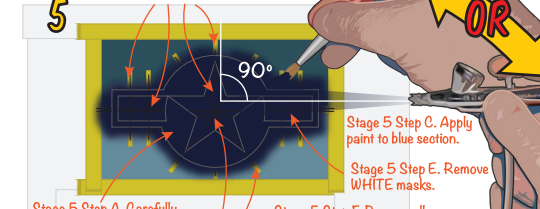
Stage 3 Step A. Remove WHITE mask sections.



Stage 3 Step B. Gradually apply paint to white areas



Stage 5 Step B. Re-cover alignment guides on the WHITE sections and around the outside of the blue section.



Stage 5 Step C. Apply paint to blue section.

Stage 5 Step E. Remove WHITE masks.

Stage 5 Step A. Carefully remove BLUE mask section.

Stage 5 Step F. Remove all remaining masking.

Stage 5 Step D. Remove masking tape from alignment guides

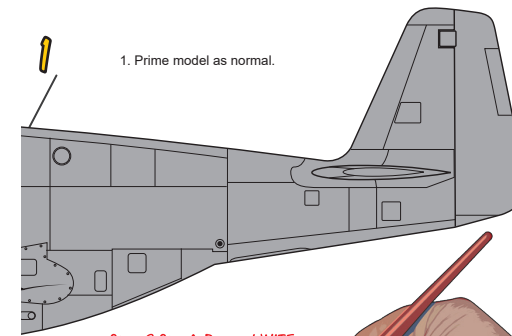
5. A) Carefully remove the BLUE mask section. Set aside. B) You will now need to again cover the alignment guides on not only the all of the white sections, but also around the outer edges of the blue section. C) Spray or hand-paint the blue section building the paint up in thin layers as before. Lightly seal with matt varnish. D) When dry, carefully lift and remove the masking tape covering the alignment guides and main mask. E) Remove the masks covering the white areas. A toothpick is useful for this task to prevent damage to the paint. Replace these parts on the backing sheet for reuse. F) Remove all of the paper protective masking and tape. Finally, gently lift off the main mask and replace on the backing sheet for reuse. If care is taken, our masks can be used several times.

6. Final result.

It goes without saying, but we would advise that you have some experience of applying markings with masks. Although a trickier option than using standard decals, masking can give a much greater degree of flexibility and also realism especially when a specific standard of weathering or fading needs to be achieved.

APPLICATION OF STAR AND BAR- UNDERPAINTED

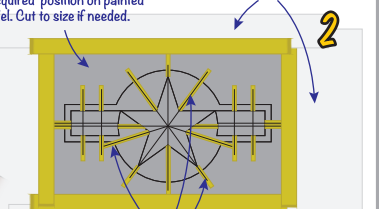
1. Prime model as normal.



2. A) Apply entire mask to required area. B) Cover area around the mask with paper and low tack (Tamiya) modelling tape. However, if under painting the markings, this step isn't essential C). Cover the registration lines on the BLUE section with tape to prevent them from being covered by paint.

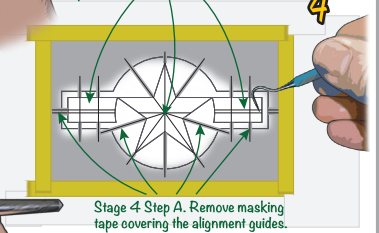
Stage 2 Step A. Place mask in required position on painted model. Cut to size if needed.

Stage 2 Step B. Mask off area around mask to prevent overpaint.

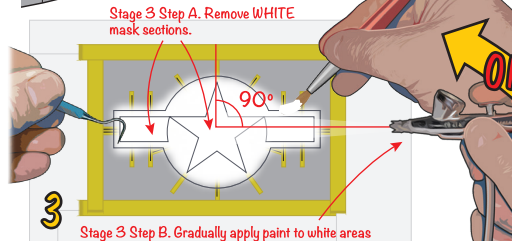


Stage 2 Step C. Cover registration lines on BLUE section with low tack modelling tape.

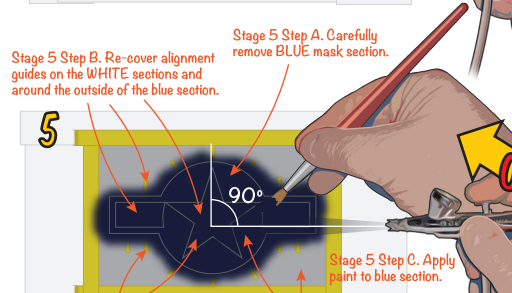
Stage 4 Step B. Carefully replace white mask sections using both the alignment guides and the edges of the blue mask section which is still in place.



Stage 4 Step A. Remove masking tape covering the alignment guides.

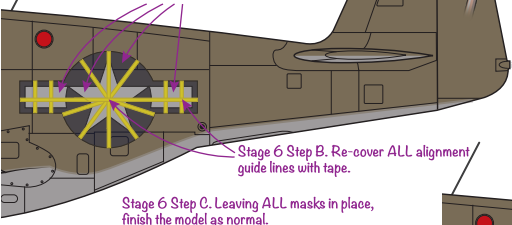


Stage 3 Step B. Gradually apply paint to white areas



Stage 5 Step D. Remove masking tape from alignment guides and all outer masking.

Stage 6 Step A. Insignia is now covered with white and blue section mask(s).



Stage 6 Step B. Re-cover ALL alignment guide lines with tape.

6. A) To recap. The entire insignia is now covered with the white sections and the main blue section mask(s). The alignment guides are visible as they have been protected from over painting throughout the process. B) You will need to cover these one last time, so repeat the process as outlined before (see '6' above). C) Spray and finish the model as you would normally. Once complete, lift off the masking tape covers and mask sections and set the latter aside for reuse.

© Kitsworld 2022

4. A) Remove the tape covers. B) Using the alignment guides, replace the white sections. Exercise care. Using the gaps in the still present blue section as a further guide will help. Use pointed tweezers and a pick to fine tune the position, making sure that the parts are sealed properly around their edges. Also take care that none of the parts are overlapping the edges of the blue section mask.

7. Final result.

